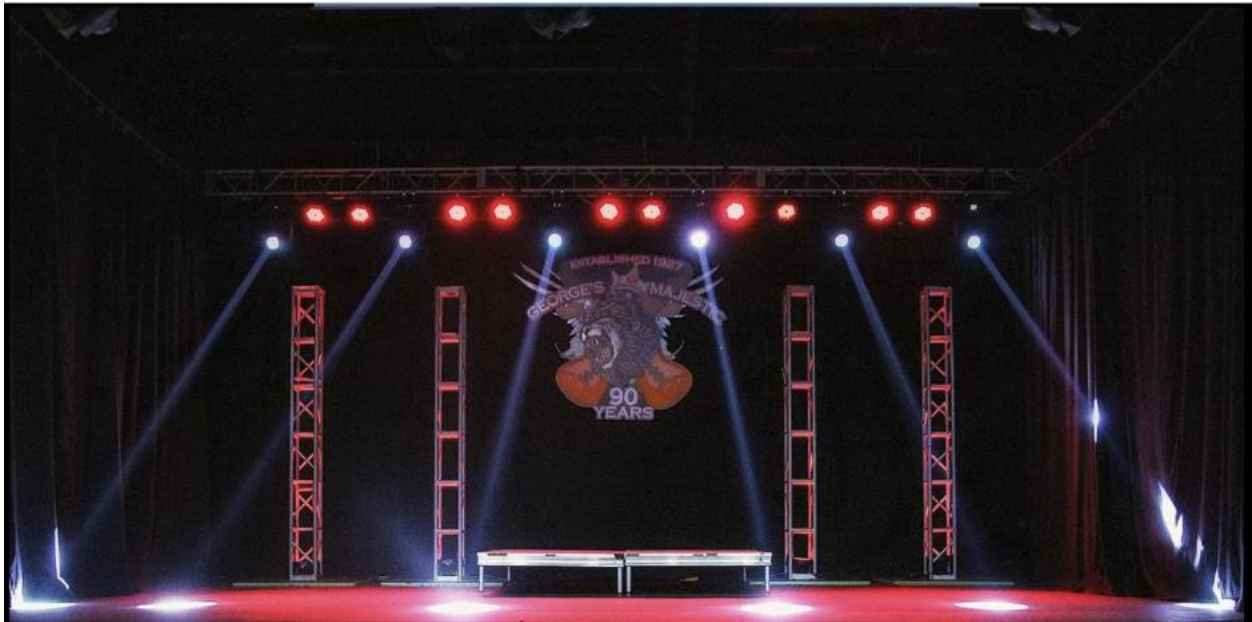


George's Majestic Lounge Technical Specification

Garden Stage



Stage Dimensions

30' wide by 22' deep with 3' tech wings stage right and left.

Trim height from deck to roof is 14'

One 8x8x1 Drum Riser (Two 4x4x1 decks modular)

Light Specs

100 amp 3 phase cam lock tie ins on wall (Upstage Left) separate from Audio

All lights are 3-pin DMX and controlled with Chauvet Show Express and APC 40 midi controller

(8) RGBW Chinese Slim Par Copies (Downstage)

(4) Chinese Sharpie Vector Copies (Upstage)

(4) Chinese Sharpie Vector Copies (Downstage)

(8) Artfox Beam Wash 19E (Upstage)

(1) Chauvet Hurricane 4D Hazer

(1) DMX Mirror Ball

Microphones

- (7) Audix i5
- (4) Sterling Audio ST31
- (6) Sennheiser e609
- (9) Sennheiser e604
- (1) Shure PG52
- (15) Shure SM58
- (1) Shure PG57
- (5) Shure SM57
- (2) Shure Beta52
- (1) Shure Beta91a
- (1) Audix D6
- (2) AKG D5
- (4) Behringer C-2

Direct Boxes

- (6) Whirlwind IMP
- (4) Radial Pro DI
- (4) Behringer DI400P
- (1) DBX DB10

Sound System

Garden Sound System Stereo 3 way F.O.H. (Subs on Aux)
100 amp 3-phase cam lock tie ins on wall (Upstage Left)

Speaker Enclosures

Mains

- (4) JBL SR4719X
- (4) JBL SRX725F

Center Fills

JBL SR722

Monitors

- (7) JBL SRX812
- (1) Dual 15 Bi-Amp Top w/ 2" Horn atop JRX-100 18" Sub

Power Amps

-FOH-

- (1) Crown XTi 4000 (High)
- (4) Crown XTi 2002 (Mid)
- (2) Crown Macro-Tech 5002VZ (Subs)

-Monitors-

- (3) Crown XTi 4002
- (3) Crown XTi 2002
- 6 Separate Monitors mixed from FOH
- (7) JBL SRX812 Wedges

Snakes

- Midas DL32 Digital Snake
- Whirlwind 48 Channel Snake w/ 48 Channel Split (30' tails)
- (2) 30' 8 Channel Sub Snake
- (2) 100' 16 Channel Live Wire Snake
- (1) 100' 12 Channel Sub Snake w/ 4 Return Channels

F.O.H Mixer

Midas M32 LIVE

F.O.H Rack

DBX Driverack Venue 360

Lounge Stage



Light Specs

All Lights are 3-Pin DMX and controlled with Chauvet Show Express and APC midi controller

- (6) RGBW LED Slimpar 64 (Downstage)
- (4) RGBW LED Slimpar 64 (Upstage)
- (4) Hurricane LED Movers (Midstage)
- (1) Chauvet Hurricane 4D Hazer

Microphones

- (7) Audix i5
- (4) Sterling Audio ST31
- (6) Sennheiser e609
- (9) Sennheiser e604
- (1) Shure PG52
- (15) Shure SM58
- (1) Shure PG57
- (5) Shure SM57
- (2) Shure Beta52
- (1) Shure Beta91a
- (1) Audix D6
- (2) AKG D5
- (4) Behringer C-2

Direct Boxes

- (6) Whirlwind IMP
- (4) Radial Pro DI
- (4) Behringer DI400P
- (1) DBX DB10

Sound System

Lounge Sound System is Stereo 2-Way F.O.H.

Speaker Enclosures

Mains

- (2) JBL SRX715
- (2) EV MTL1x Dual 18' Folded Subs
- (1) Yamaha C112v (Center Fill)

Monitors

- (4) JBL SRX 812p
- (1) JRX 100
- (1) JRX Powered Sub

Power Amps

-Mains & Subs-

- (3) Crown XTi 4000

-Monitors-

- (1) Crown XTi 2002 (JRX100)

Snakes

- (1) 50' Whirlwind Medusa Mini 12
- (1) 20' 16 Channel Sub Snake
- (1) Midas DL32 Digital Snake

F.O.H Mixer

Midas M32

F.O.H Rack

DBX Driverack PA+

ADDITIONAL INFORMATION

Hotel Accomodation - \$75/night rate at Chancellor Hotel

Link:

[Graduate Hotel](#)

Booking:

<https://be.synxis.com/?chain=21643&hotel=7837&promo=NEGGML>

Graduate Hotel

70 N East Ave, Fayetteville, AR 72701

(479) 442-5555

Maps:

<https://goo.gl/maps/S3GQi7AAkS72>

Laundry - UofA Laundry, across the street; Hours: Mon-Sat 8am-5pm

Greenroom - 1 greenroom directly behind stage with private shower and restroom Lighting

Package Patch Kit -

<https://www.dropbox.com/sh/na9n2k2rfovhepy/AAAG6scsQWSov8MmTit0zDrfa?dl=0>

****FRIDAY SHOWS** George's has a 30 year happy hour tradition with live music every Friday which loads in at 4pm and plays 6-8pm in our large back room. Artists who wish to load in and sound check prior to this performance may do so as long as we have a dark stage by 4pm and a clear downstage**

Parking Instructions



NORTH



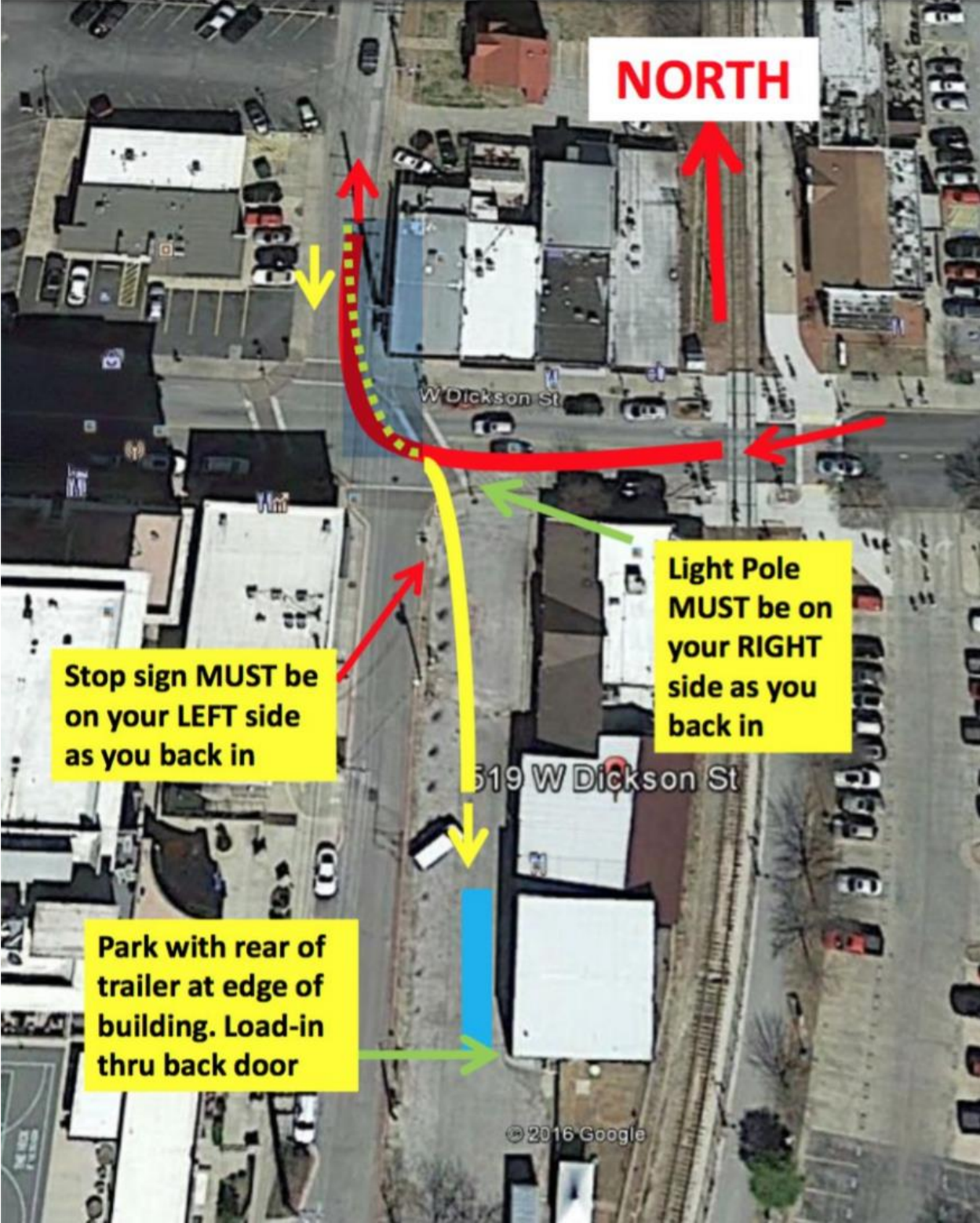
W Dickson St

**Back over curb
between lines**

**Stop sign MUST be
on your LEFT side
as you back in**

**Light Pole
MUST be on
your RIGHT
side as you
back in**

© 2016 Google



NORTH

Stop sign MUST be on your LEFT side as you back in

Light Pole MUST be on your RIGHT side as you back in

Park with rear of trailer at edge of building. Load-in thru back door

W Dickson St

519 W Dickson St

© 2016 Google